

TIAN HUA (MEGA)

Shade the world

Silicone Profile

Shade LED Strip Light



Zhongshan TianHua Profile Tech Co., Ltd

ADD: Building 16, XingXin Orad, Guzhen Town, Zhongshan City, Guangdong Province, China.

Email: 1921278660@QQ.COM, INFORM@MEGA-LEDPROFILE.COM

Web: mega-ledprofile.com

Call: 0086 158 0017 9216





ABOUT US



MEGA is a professional silicon profile supplier, belongs to TianHua Profile Tech Group.

We have been Supplying all kinds of silicon profiles for the led strip light from China, for more than 12 years. As per the supporting of TIANHUA Profile Tech. Group, our silicon profiles have been distributed to around 66 countries and regions all over the world. More, our factory could make any custom made of shade of silicon profile, for any special lighting projects.





6 Advantages of Silicone Profile

- Excellent corrosion resistance: resistant to corrosion by ordinary acids, alkalis, and salts.



- Excellent light transmittance: The light transmittance of silicone exceeds 80%



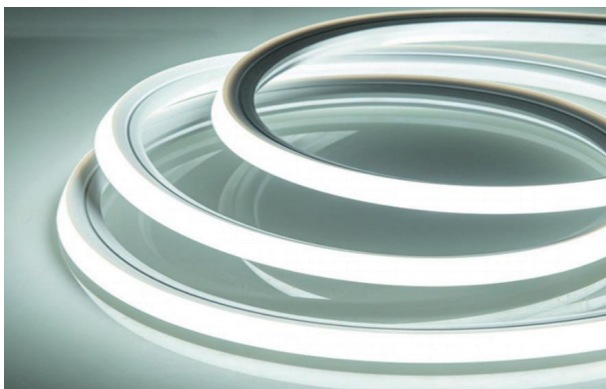
- Excellent softness, easy to bend, and can be shaped into different shapes for billboards.



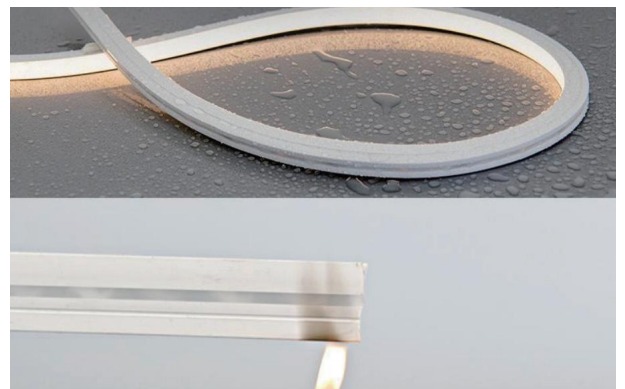
- Good thermal conductivity: significantly higher than PVC thermal conductivity, can effectively dissipate heat.



- Maintain normal softness at $-50\sim 150^{\circ}\text{C}$, and will not yellow or age under strong sunlight.



- Food grade environmentally friendly material, waterproof, fireproof, anti-tear



CONTENTS

A

Side View Series

1-2



B

Front+Side View Series

3

C

Three-side View Series

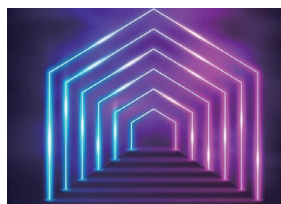
3



D

Front View Series

4-9



E

Mask Series

10-20

F

Round Series

21

G

Transparent Sleeve

22



H

Cover for Aluminum Profile

22

I

Accessory

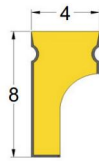
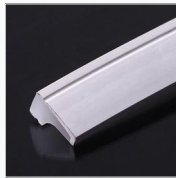
23



A Side View Series

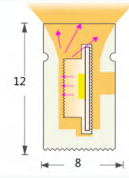
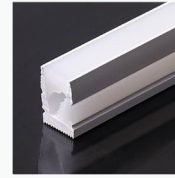
0408 Side

Size: 4mm*8mm
Light Angle: 120°
PCB Widths: 5mm



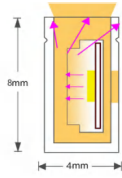
0812 Side

Size: 8mm*12mm
Light Angle: 120°
PCB Widths: 5-6mm



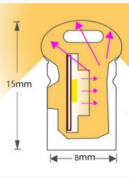
0408 Side

Size: 4mm*8mm
Light Angle: 120°
PCB Widths: 4mm



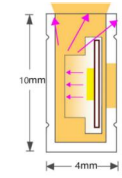
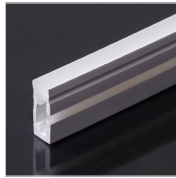
0815 Side Arc

Size: 8mm*15mm
Light Angle: 120°
PCB Widths: 8mm



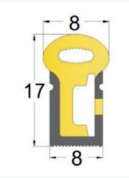
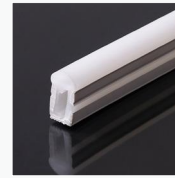
0410 Side

Size: 4mm*10mm
Light Angle: 120°
PCB Widths: 5mm



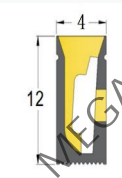
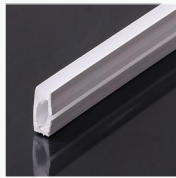
0817 Side Arc

Size: 8mm*17mm
Light Angle: 120°
PCB Widths: 8-10mm



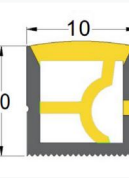
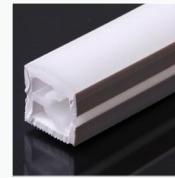
0412 Side

Size: 4mm*12mm
Light Angle: 120°
PCB Widths: 5-8mm



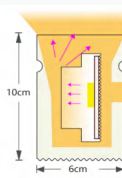
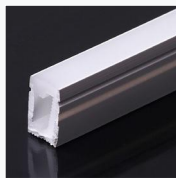
1010 Side

Size: 10mm*10mm
Light Angle: 120°
PCB Widths: 5mm



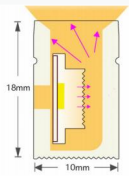
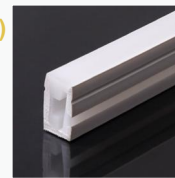
0610 Side

Size: 6mm*10mm
Light Angle: 120°
PCB Widths: 5mm



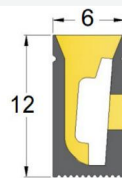
1018 Side(8mm PCB)

Size: 10mm*18mm
Light Angle: 120°
PCB Widths: 8mm



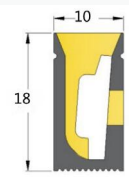
0612 Side

Size: 6mm*12mm
Light Angle: 120°
PCB Widths: 5-8mm



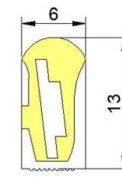
1018 Side(10mm PCB)

Size: 10mm*18mm
Light Angle: 120°
Widths: 10mm



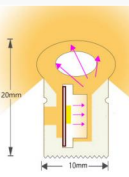
0613 Side Arc

Size: 6mm*13mm
Light Angle: 120°
PCB Widths: 8mm



1020 Side Arc

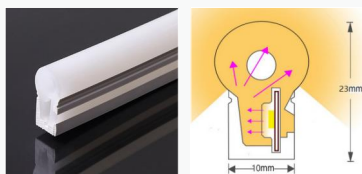
Size: 10mm*20mm
Light Angle: 120°
PCB Widths: 8mm



A Side View Series

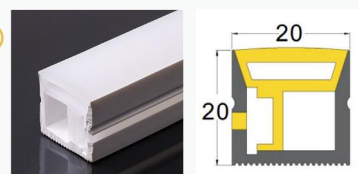
1023 Side Arc

Size: 10mm*23mm
Light Angle: 120°
PCB Widths: 10mm



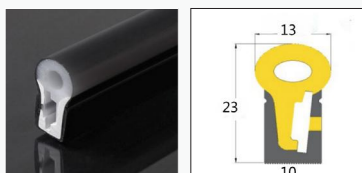
2020 Side(10mm PCB)

Size: 20mm*20mm
Light Angle: 120°
PCB Widths: 10mm



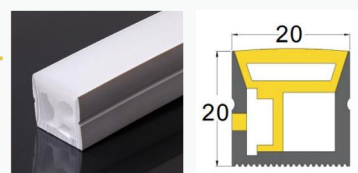
1023 Side Arc Black

Size: 10mm*23mm
Light Angle: 120°
PCB Widths: 8-10mm



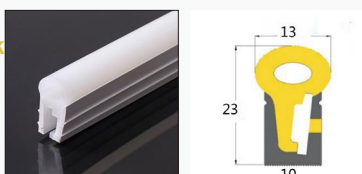
2020 Side Floor Decor

Size: 20mm*20mm
Light Angle: 120°
PCB Widths: 8-10mm



1023 Side Arc Mask

Size: 10mm*23mm
Light Angle: 120°
PCB Widths: 10mm



3020 Side Floor Decor

Size: 30mm*20mm
Light Angle: 120°
PCB Widths: 8-10mm



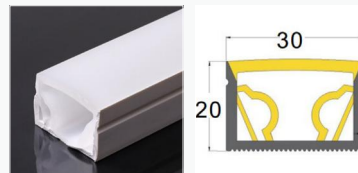
1220 Side

Size: 12mm*20mm
Light Angle: 120°
PCB Widths: 10mm



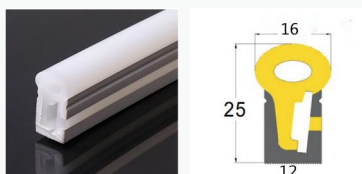
3020 Side

Size: 30mm*20mm
Light Angle: 120°
PCB Widths: 10mm



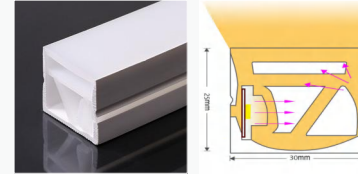
1225 Side Arc

Size: 12mm*25mm
Light Angle: 120°
PCB Widths: 10-12mm



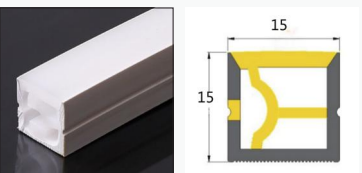
3025 Side

Size: 30mm*25mm
Light Angle: 120°
PCB Widths: 8-10mm



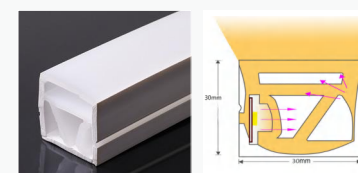
1515 Side(8mm PCB)

Size: 15mm*15mm
Light Angle: 120°
PCB Widths: 8mm



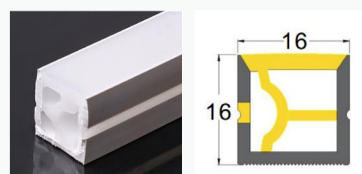
3030 Side

Size: 30mm*30mm
Light Angle: 120°
PCB Widths: 12mm



1616 Side

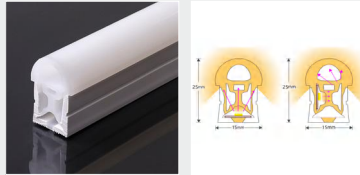
Size: 16mm*16mm
Light Angle: 120°
PCB Widths: 8-10mm



B Front+Side View Series

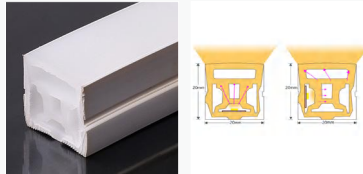
1525 Front+side

Size: 15mm*25mm
Light Angle: 120°
PCB Widths: 8mm



2020 Front+side

Size: 20mm*20mm
Light Angle: 120°
PCB Widths: 8mm



4025 Front+side

Size: 40mm*25mm
Light Angle: 120°
PCB Widths: 8-10mm



5025 Front+side

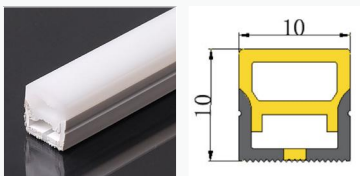
Size: 50mm*25mm
Light Angle: 120° PCB
Widths: 20mm+10mm



C Three-side View Series

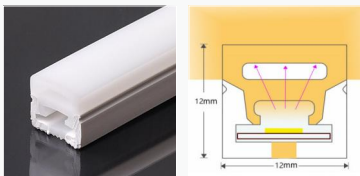
1010 Three-side

Size: 10mm*10mm
Light Angle: 120°
PCB Widths: 6mm



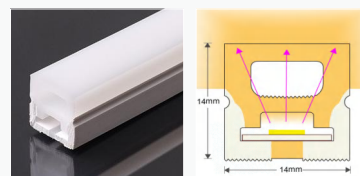
1212 Three-side

Size: 12mm*12mm
Light Angle: 120°
PCB Widths: 8mm



1414 Three-side

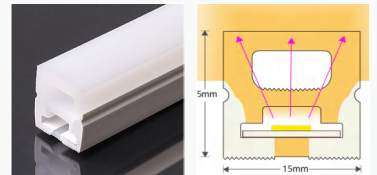
Size: 14mm*14mm
Light Angle: 120°
PCB Widths: 8-12mm



C Three-side View Series

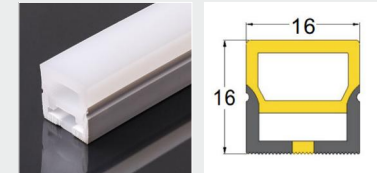
1515 Three-side

Size: 15mm*15mm
Light Angle: 120°
PCB Widths: 8-12mm



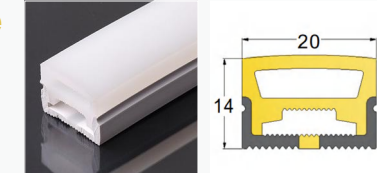
1616 Three-side

Size: 16mm*16mm
Light Angle: 120°
PCB Widths: 8-12mm



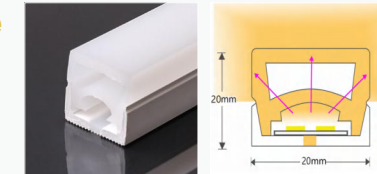
2014 Three-side

Size: 20mm*14mm
Light Angle: 120°
PCB Widths: 8-12mm



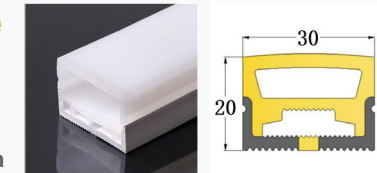
2020 Three-side

Size: 20mm*20mm
Light Angle: 120°
PCB Widths: 8-12mm



3020 Three-side

Size: 30mm*20mm
Light Angle: 120°
PCB Widths: 12-18mm



5025 Three-side

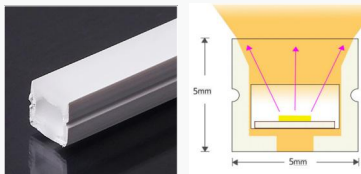
Size: 50mm*25mm
Light Angle: 120°
PCB widths: 10-15mm



D Front View Series

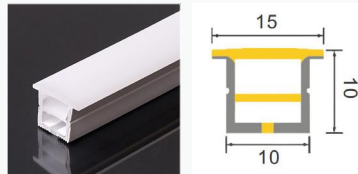
0505 Front A

Size: 5mm*5mm
Light Angle: 120°
PCB Widths: 3mm



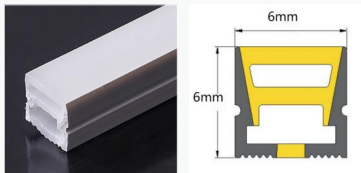
1010 Front PS Frame

Size: 10mm*10mm
Light Angle: 120°
PCB Widths: 5-6mm



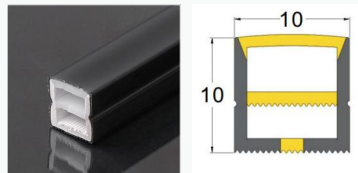
0606 Front

Size: 6mm*6mm
Light Angle: 120°
PCB Widths: 4-5mm



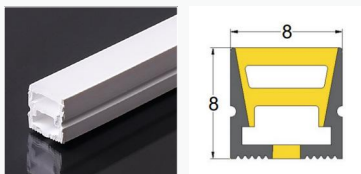
1010 Front Black

Size: 10mm*10mm
Light Angle: 120°
PCB Widths: 5-6mm



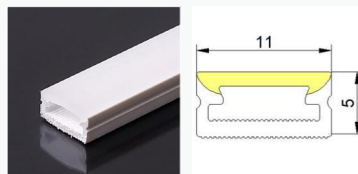
0808 Front A1

Size: 8mm*8mm
Light Angle: 120°
PCB Widths: 4-5mm



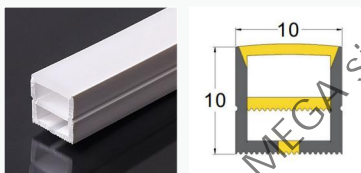
1105 Front matte

Size: 11mm*05mm
Light Angle: 120°
PCB Widths: 6-8mm



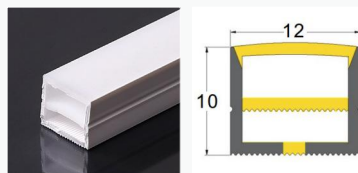
1010 Front A

Size: 10mm*10mm
Light Angle: 120°
PCB Widths: 5-6mm



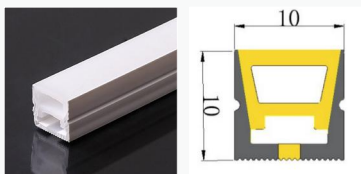
1210 Front A

Size: 12mm*10mm
Light Angle: 120°
PCB Widths: 6-8mm



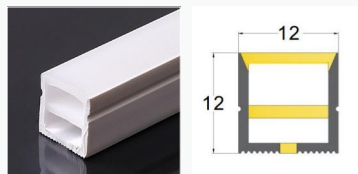
1010 Front B

Size: 10mm*10mm
Light Angle: 120°
PCB Widths: 5-6mm



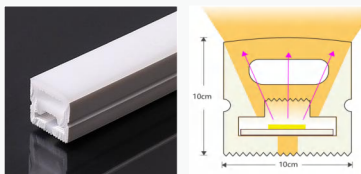
1212 Front A

Size: 12mm*12mm
Light Angle: 120°
PCB Widths: 6-8mm



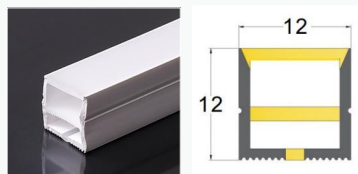
1010 Front C

Size: 10mm*10mm
Light Angle: 120°
PCB Widths: 5-6mm



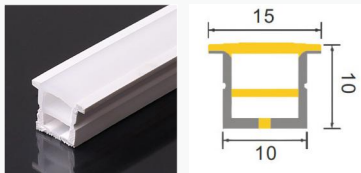
1212 Front A1

Size: 12mm*12mm
Light Angle: 120°
PCB Widths: 6-8mm



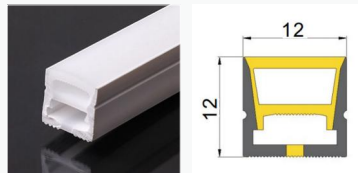
1010 Front White Frame

Size: 10mm*10mm
Light Angle: 120°
PCB Widths: 6-8mm



1212 Front B

Size: 12mm*12mm
Light Angle: 120°
PCB Widths: 6-8mm



D Front View Series

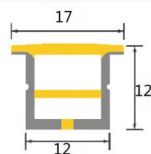
1212 Front

White Frame

Size: 12mm*12mm

Light Angle: 120°

PCB Widths: 6-8mm

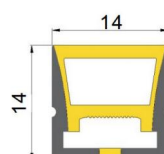


1414 Front B

Size: 14mm*14mm

Light Angle: 120°

PCB Widths: 8mm



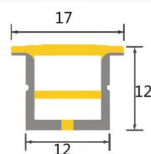
1212 Front

PS Frame

Size: 12mm*12mm

Light Angle: 120°

PCB Widths: 6-8mm



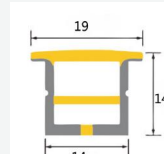
1414 Front

White Frame

Size: 14mm*14mm

Light Angle: 120°

PCB Widths: 8-10mm

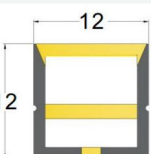


1212 Front Black

Size: 12mm*12mm

Light Angle: 120°

PCB Widths: 6-8mm

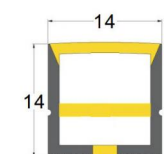


1414 Front Black

Size: 14mm*14mm

Light Angle: 120°

PCB Widths: 8-10mm

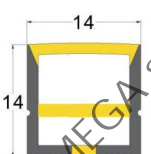


1414 Front A

Size: 14mm*14mm

Light Angle: 120°

PCB Widths: 8-10mm

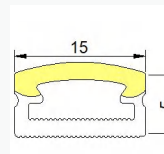


1505 Front

Size: 15mm*5mm

Light Angle: 120°

PCB Widths: 8-10mm

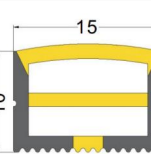


1510 Front Black

Size: 15mm*10mm

Light Angle: 120°

PCB Widths: 8-10mm

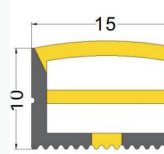


1510 Front

Size: 15mm*10mm

Light Angle: 120°

PCB Widths: 8-10mm

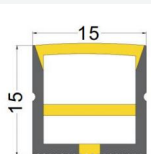


1515 Front A

Size: 15mm*15mm

Light Angle: 120°

PCB Widths: 8-10mm

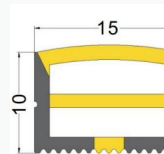


1510 Front A

Size: 15mm*10mm

Light Angle: 120°

PCB Widths: 8-10mm

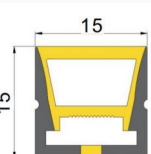


1515 Front B

Size: 15mm*15mm

Light Angle: 120°

PCB Widths: 8-10mm



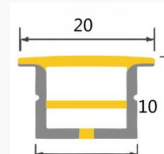
1510Front

White Frame

Size: 15mm*10mm

Light Angle: 120°

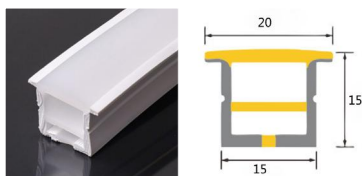
PCB Widths: 8-10mm



D Front View Series

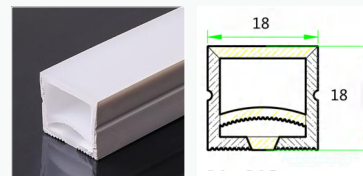
1515 Front White Frame

Size: 15mm*15mm
Light Angle: 120°
PCB Widths: 8-10mm



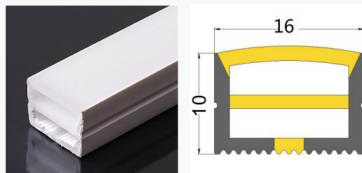
1818 Front

Size: 18mm*18mm
Light Angle: 120°
PCB Widths: 10-12mm



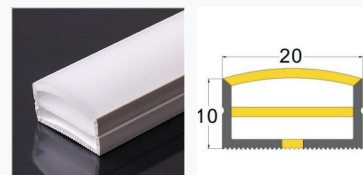
1610 Front

Size: 16mm*10mm
Light Angle: 120°
PCB Widths: 8-12mm



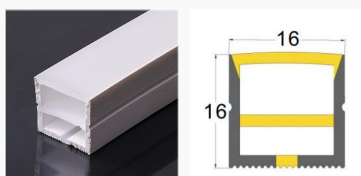
2010 Front A

Size: 20mm*10mm
Light Angle: 120°
PCB Widths: 8-12mm



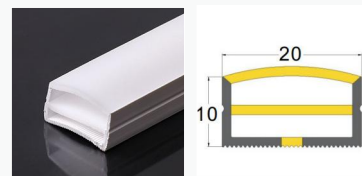
1616 Front A

Size: 16mm*16mm
Light Angle: 120°
PCB Widths: 8-12mm



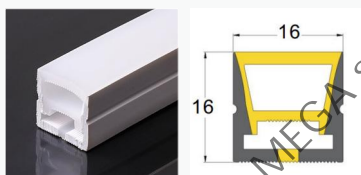
2010 Front D

Size: 20mm*10mm
Light Angle: 120°
PCB Widths: 8-12mm



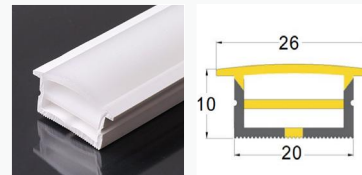
1616 Front

Size: 16mm*16mm
Light Angle: 120°
PCB Widths: 8-10mm



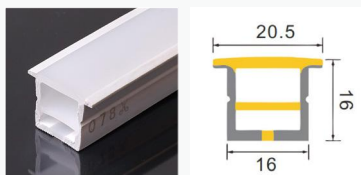
2010 Front White Frame

Size: 20mm*10mm
Light Angle: 120°
PCB Widths: 8-12mm



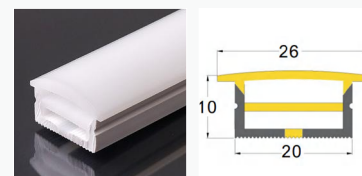
1616 Front White Frame

Size: 16mm*16mm
Light Angle: 120°
PCB Widths: 8-10mm



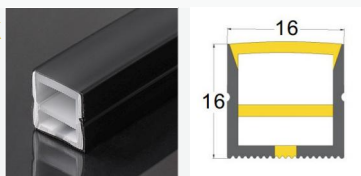
2010 Front PS Frame

Size: 20mm*10mm
Light Angle: 120°
PCB Widths: 8-12mm



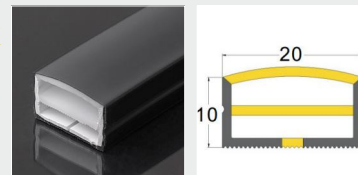
1616 Front Black

Size: 16mm*16mm
Light Angle: 120°
PCB Widths: 8-10mm



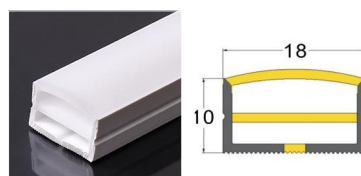
2010 Front Black

Size: 20mm*10mm
Light Angle: 120°
PCB Widths: 8-12mm



1810 Front

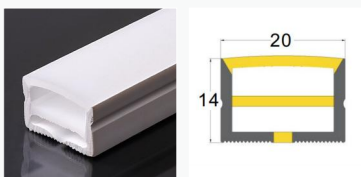
Size: 18mm*10mm
Light Angle: 120°
PCB Widths: 8-12mm



D Front View Series

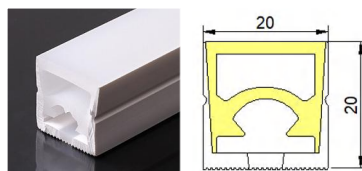
2014 Front A

Size: 20mm*14mm
Light Angle: 120°
PCB Widths: 8-12mm



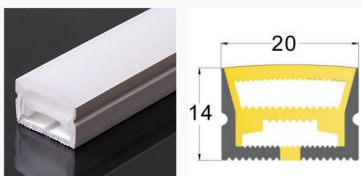
2020 Front B

Size: 20mm*20mm
Light Angle: 120°
PCB Widths: 10-15mm



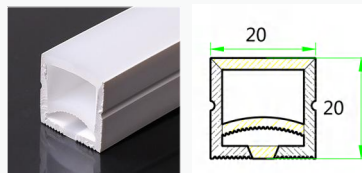
2014 Front B

Size: 20mm*14mm
Light Angle: 120°
PCB Widths: 8-12mm



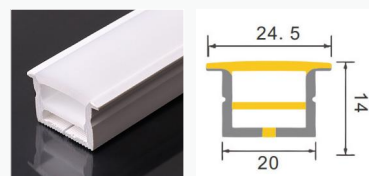
2020 Front B1

Size: 20mm*20mm
Light Angle: 120°
PCB Widths: 10-15mm



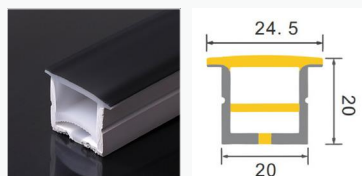
2014 Front White Frame

Size: 20mm*14mm
Light Angle: 120°
PCB Widths: 8-12mm



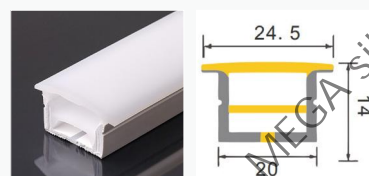
2020 Front Black Face Frame

Size: 20mm*20mm
Light Angle: 120°
PCB Widths: 8-12mm



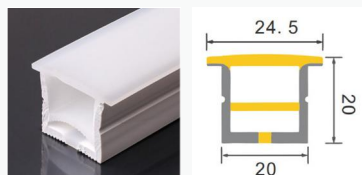
2014 Front PS Frame

Size: 20mm*14mm
Light Angle: 120°
PCB Widths: 8-12mm



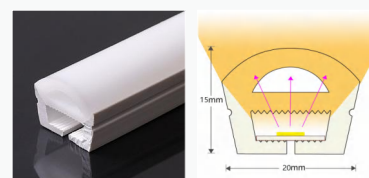
2020 Front PS Frame

Size: 20mm*20mm
Light Angle: 120°
PCB Widths: 10-12mm



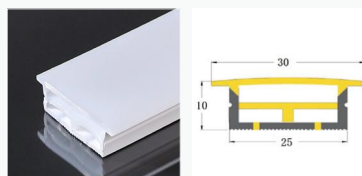
2015 Back in

Size: 20mm*15mm
Light Angle: 120°
PCB Widths: 8-12mm



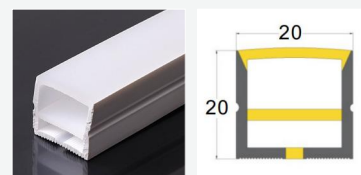
2510 Front double PCB PS Frame

Size: 25mm*10mm
Light Angle: 120°
PCB Widths: 8mm



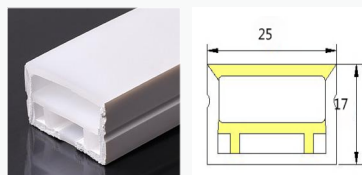
2020 Front A

Size: 20mm*20mm
Light Angle: 120°
PCB Widths: 8-12mm



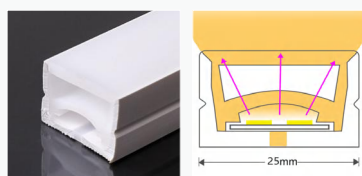
2517 Front A

Size: 25mm*17mm
Light Angle: 120°
PCB Widths: 8-15mm



2517 Front B

Size: 25mm*17mm
Light Angle: 120°
PCB Widths: 10-15mm

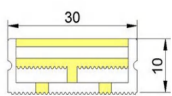


D Front View Series

3010 Front

Double PCB

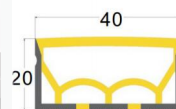
Size: 30mm*10mm
Light Angle: 120°
PCB Widths: 8-12mm



4020 Front

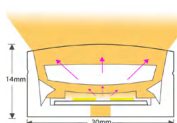
Double PCB

Size: 40mm*20mm
Light Angle: 120°
PCB Widths: 8-12mm



3014 Front

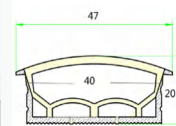
Size: 30mm*14mm
Light Angle: 120°
PCB Widths: 12-18mm



4020 Front

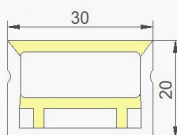
Double PCB White Frame

Size: 40mm*20mm
Light Angle: 120°
PCB Widths: 8-12mm



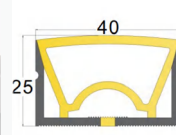
3020 Front A

Size: 30mm*20mm
Light Angle: 120°
PCB Widths: 8-15mm



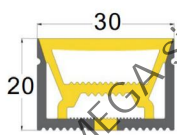
4025 Front A

Size: 40mm*25mm
Light Angle: 120°
PCB Widths: 10-20mm



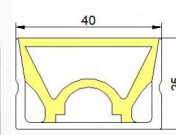
3020 Front E

Size: 30mm*20mm
Light Angle: 120°
PCB Widths: 8-15mm



4025 Front B

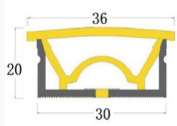
Size: 40mm*25mm
Light Angle: 120°
PCB Widths: 15-18mm



3020 Front

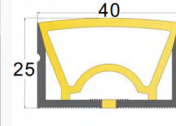
PS Frame

Size: 30mm*20mm
Light Angle: 120°
PCB Widths: 10-15mm



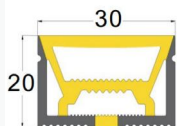
4025 Front Black

Size: 40mm*25mm
Light Angle: 120°
PCB Widths: 15-18mm



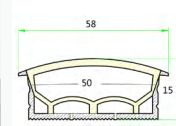
3020 Front Black

Size: 30mm*20mm
Light Angle: 120°
PCB Widths: 12-15mm



5015 Front Double PCB White Frame

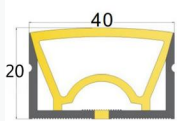
Size: 50mm*15mm
Light Angle: 120°
PCB Widths: 10-15mm



4020 Front

Single PCB

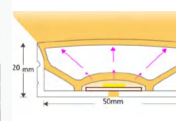
Size: 40mm*20mm
Light Angle: 120°
PCB Widths: 10-20mm



5020 Front

Single PCB

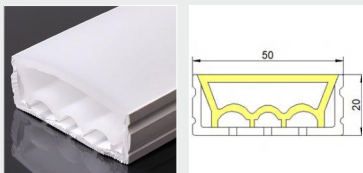
Size: 50mm*20mm
Light Angle: 120°
PCB Widths: 15-20mm



D Front View Series

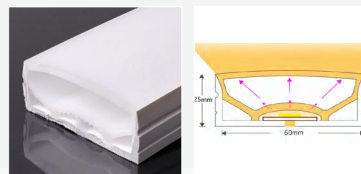
5020 Front Three PCB

Size: 50mm*20mm
Light Angle: 120°
PCB Widths: 8-10mm



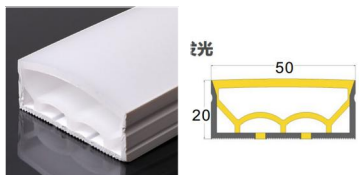
6025 Front Single PCB

Size: 60mm*25mm
Light Angle: 120°
PCB Widths: 20mm



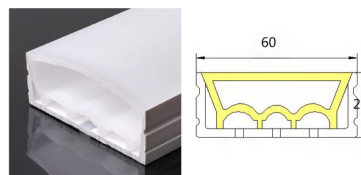
5020 Front Double PCB

Size: 50mm*20mm
Light Angle: 120°
PCB Widths: 10-12mm



6025 Front Three PCB

Size: 60mm*25mm
Light Angle: 120°
PCB Widths: 8-10mm



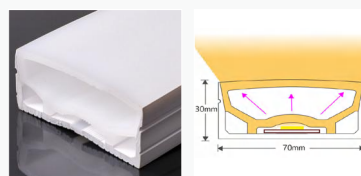
5025 Front A

Size: 50mm*25mm
Light Angle: 120°
PCB Widths: 15-20mm



7030 Front Single PCB

Size: 70mm*30mm
Light Angle: 120°
PCB Widths: 20-30mm



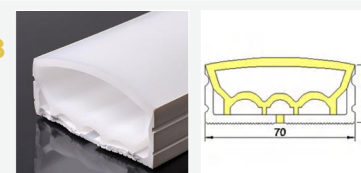
5025 Front B

Size: 50mm*25mm
Light Angle: 120°
PCB Widths: 15-20mm



7030 Front Three PCB

Size: 70mm*30mm
Light Angle: 120°
PCB Widths: 8-12mm



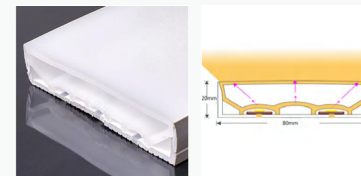
5025 Front Single PCB PS Frame

Size: 50mm*25mm
Light Angle: 120°
PCB Widths: 12-20mm



8020 Front Three PCB

Size: 80mm*20mm
Light Angle: 120°
PCB Widths: 8-12mm



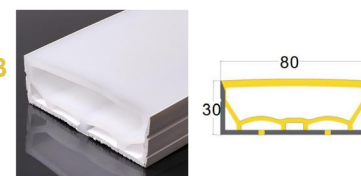
5025 Front Black

Size: 50mm*25mm
Light Angle: 120°
PCB Widths: 15-20mm



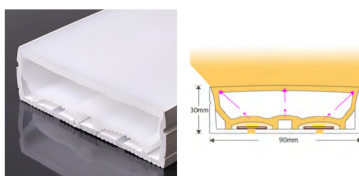
8030 Front Double PCB

Size: 80mm*30mm
Light Angle: 120°
PCB Widths: 20-30mm



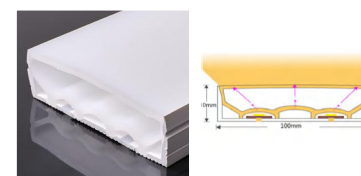
9030 Front Double PCB

Size: 90mm*30mm
Light Angle: 120°
PCB Widths: 20-30mm



10030 Front Three PCB

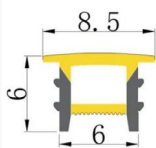
Size: 100mm*30mm
Light Angle: 120°
PCB Widths: 8-12mm



E Mask Series

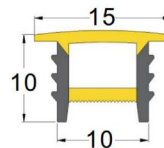
0606 T-Mask A

Size: 6mm*6mm
Light Angle: 120°
PCB Widths: 4-5mm



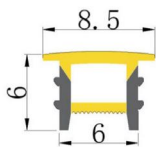
1010 T-Mask A Grey

Size: 10mm*10mm
Light Angle: 120°
PCB Widths: 6-8mm



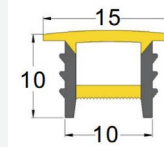
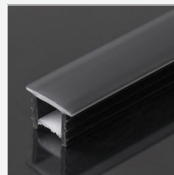
0606 T-Mask C

Size: 6mm*6mm
Light Angle: 120°
PCB Widths: 4mm



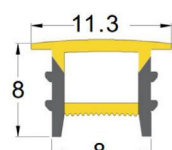
1010 T-Mask A Black

Size: 10mm*10mm
Light Angle: 120°
PCB Widths: 6-8mm



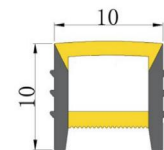
0808 T-Mask A

Size: 8mm*8mm
Light Angle: 120°
PCB Widths: 4-6mm



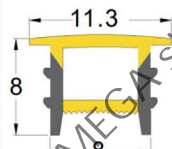
1010 Mask A

Size: 10mm*10mm
Light Angle: 120°
PCB Widths: 6-8mm



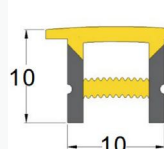
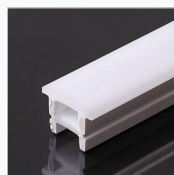
0808 T-Mask C

Size: 8mm*8mm
Light Angle: 120°
PCB Widths: 4-5mm



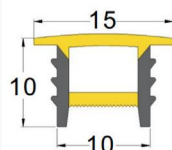
1010 T-Mask B

Size: 10mm*10mm
Light Angle: 120°
PCB Widths: 6-8mm



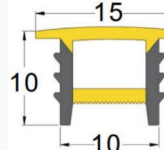
1010 T-Mask A

Size: 10mm*10mm
Light Angle: 120°
PCB Widths: 6-8mm



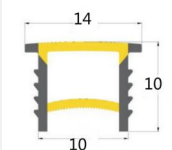
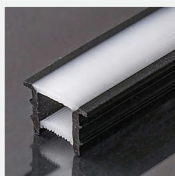
1010 T-Mask C

Size: 10mm*10mm
Light Angle: 120°
PCB Widths: 6-8mm



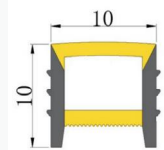
1010 T-Mask A Black Face (new)

Size: 10mm*10mm
Light Angle: 120°
PCB Widths: 6-8mm



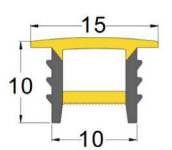
1010 Mask Black

Size: 10mm*10mm
Light Angle: 120°
PCB Widths: 6-8mm



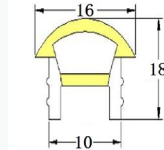
1010 T-Mask A Black Face

Size: 10mm*10mm
Light Angle: 120°
PCB Widths: 6-8mm



1018 Mask Arc

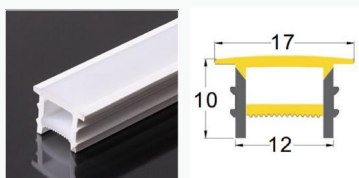
Size: 10mm*18mm
Light Angle: 120°
PCB Widths: 8mm



E Mask Series

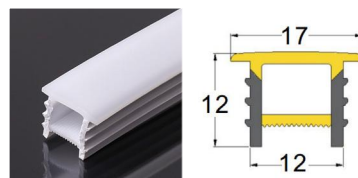
1210 T-Mask A

Size: 12mm*10mm
Light Angle: 120°
PCB Widths: 8-10mm



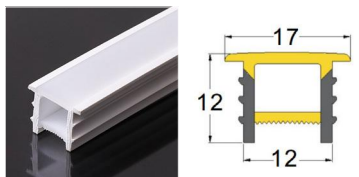
1212 T-Mask C

Size: 12mm*12mm
Light Angle: 120°
PCB Widths: 6-10mm



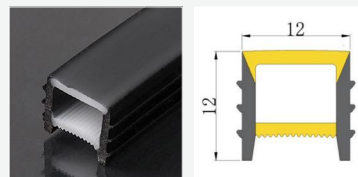
1212 T-Mask A

Size: 12mm*12mm
Light Angle: 120°
PCB Widths: 8-10mm



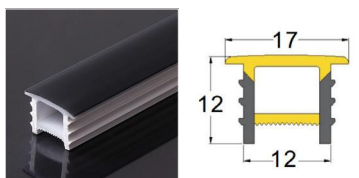
1212 Mask Black

Size: 12mm*12mm
Light Angle: 120°
PCB Widths: 8-10mm



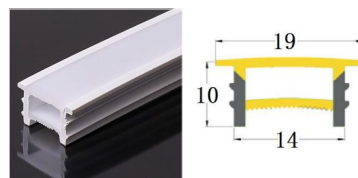
1212 T-Mask A Black

Size: 12mm*12mm
Light Angle: 120°
PCB Widths: 8-10mm



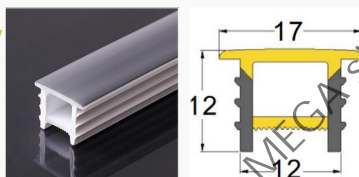
1410 T-Mask A

Size: 14mm*10mm
Light Angle: 120°
PCB Widths: 8-12mm



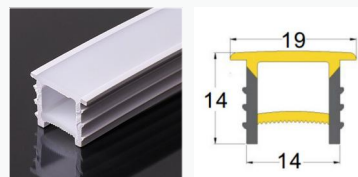
1212 T-Mask A Grey

Size: 12mm*12mm
Light Angle: 120°
PCB Widths: 8-10mm



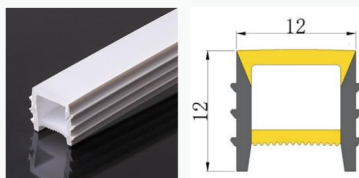
1414 T-Mask A

Size: 14mm*14mm
Light Angle: 120°
PCB Widths: 8-12mm



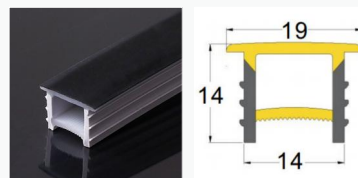
1212 Mask A

Size: 12mm*12mm
Light Angle: 120°
PCB Widths: 8-10mm



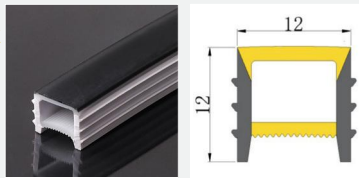
1414 T-Mask A Black

Size: 14mm*14mm
Light Angle: 120°
PCB Widths: 8-12mm



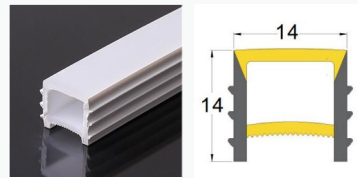
1212 Mask A Black

Size: 12mm*12mm
Light Angle: 120°
PCB Widths: 6-8mm



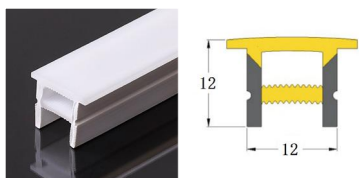
1414 Mask A

Size: 14mm*14mm
Light Angle: 120°
PCB Widths: 8-12mm



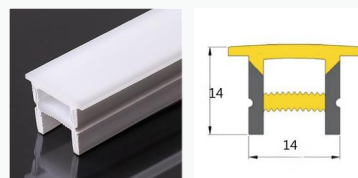
1212 T-Mask B

Size: 12mm*12mm
Light Angle: 120°
PCB Widths: 8-10mm



1414 T-Mask B

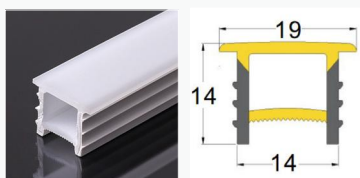
Size: 14mm*14mm
Light Angle: 120°
PCB Widths: 8-10mm



E Mask Series

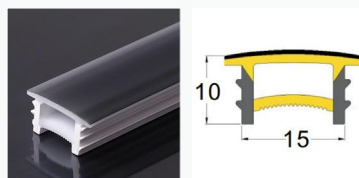
1414 T-Mask C

Size: 14mm*14mm
Light Angle: 120°
PCB Widths: 8-12mm



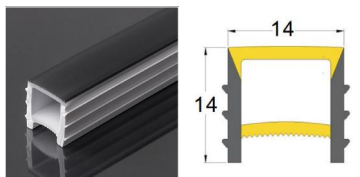
1510 T-Mask A Grey

Size: 15mm*10mm
Light Angle: 120°
PCB Widths: 8-12mm



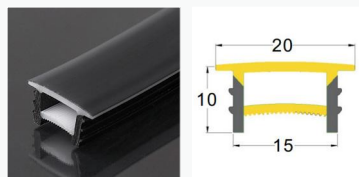
1414 Mask Black

Size: 14mm*14mm
Light Angle: 120°
PCB Widths: 8-12mm



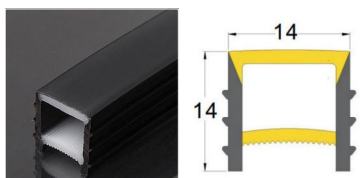
1510 T-Mask A Black

Size: 15mm*10mm
Light Angle: 120°
PCB Widths: 8-12mm



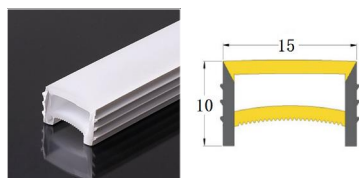
1414 Mask Black

Size: 14mm*14mm
Light Angle: 120°
PCB Widths: 8-12mm



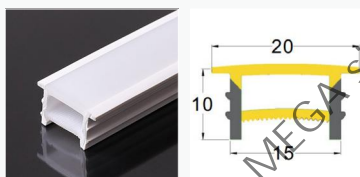
1510 Mask A

Size: 15mm*10mm
Light Angle: 120°
PCB Widths: 8-12mm



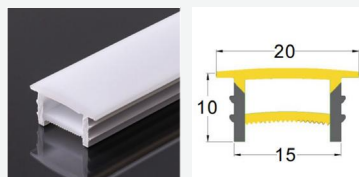
1510 T-Mask A

Size: 15mm*10mm
Light Angle: 120°
PCB Widths: 8-12mm



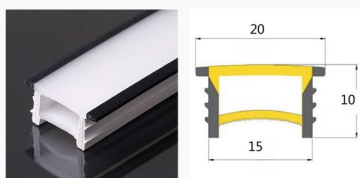
1510 T-Mask C

Size: 15mm*10mm
Light Angle: 120°
PCB Widths: 8-12mm



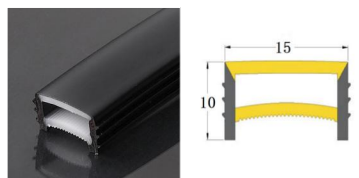
1510 T-Mask A Black Frame

Size: 15mm*10mm
Light Angle: 120°
PCB Widths: 8-12mm



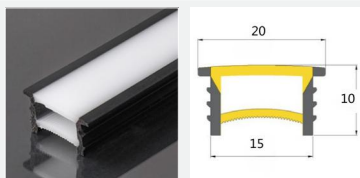
1510 Mask Black

Size: 15mm*10mm
Light Angle: 120°
PCB Widths: 8-12mm



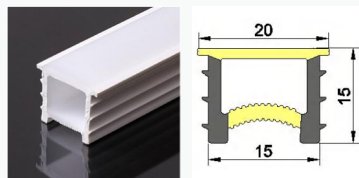
1510 T-Mask A Black Frame

Size: 15mm*10mm
Light Angle: 120°
PCB Widths: 8-12mm



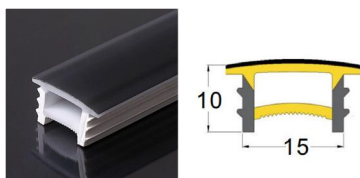
1515 T-Mask A

Size: 15mm*15mm
Light Angle: 120°
PCB Widths: 8-12mm



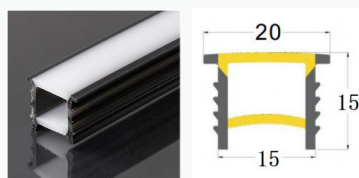
1510 T-Mask A Black

Size: 15mm*10mm
Light Angle: 120°
PCB Widths: 8-12mm



1515 T-Mask A Black Frame

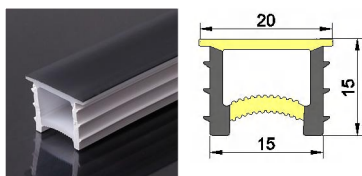
Size: 15mm*15mm
Light Angle: 120°
PCB Widths: 8-12mm



E Mask Series

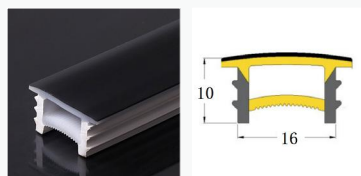
1515 T-Mask A Black

Size: 15mm*15mm
Light Angle: 120°
PCB Widths: 8-12mm



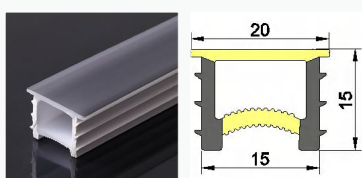
1610 T-Mask A Black

Size: 16mm*10mm
Light Angle: 120°
PCB Widths: 8-12mm



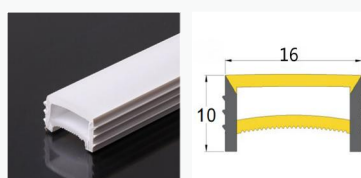
1515 T-Mask A Grey

Size: 15mm*15mm
Light Angle: 120°
PCB Widths: 8-12mm



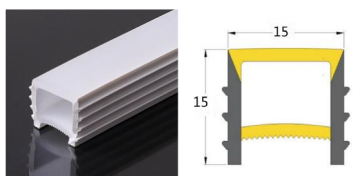
1610 Mask A

Size: 16mm*10mm
Light Angle: 120°
PCB Widths: 8-12mm



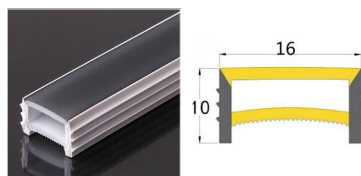
1515 Mask A

Size: 15mm*15mm
Light Angle: 120°
PCB Widths: 8-12mm



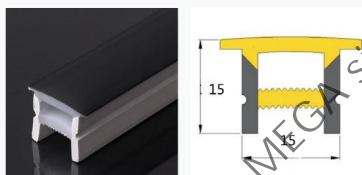
1610 Mask A Black

Size: 16mm*10mm
Light Angle: 120°
PCB Widths: 8-12mm



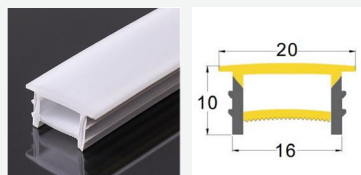
1515 Mask B Black

Size: 15mm*15mm
Light Angle: 120°
PCB Widths: 8-12mm



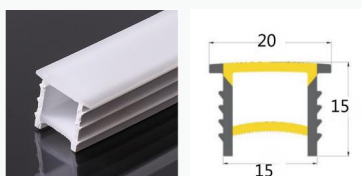
1610 T-Mask C

Size: 16mm*10mm
Light Angle: 120°
PCB Widths: 8-12mm



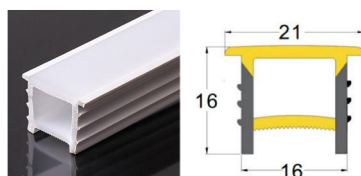
1515 T-Mask C

Size: 15mm*15mm
Light Angle: 120°
PCB Widths: 8-12mm



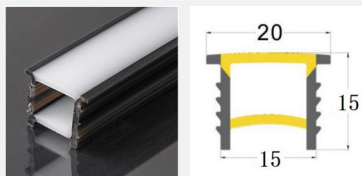
1616 T-Mask A

Size: 16mm*16mm
Light Angle: 120°
PCB Widths: 8-12mm



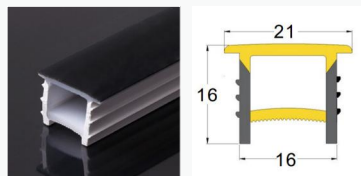
1515 T-Mask Black Frame

Size: 15mm*15mm
Light Angle: 120°
PCB Widths: 8-12mm



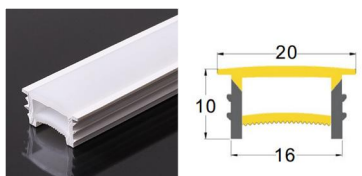
1616 T-Mask A Black

Size: 16mm*16mm
Light Angle: 120°
PCB Widths: 8-12mm



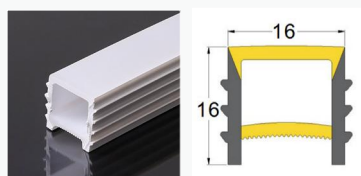
1610 T-Mask A

Size: 16mm*10mm
Light Angle: 120°
PCB Widths: 8-12mm



1616 Mask A

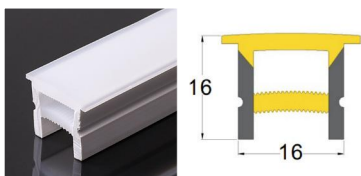
Size: 16mm*16mm
Light Angle: 120°
PCB Widths: 8-12mm



E Mask Series

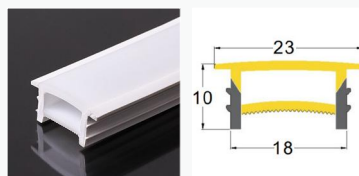
1616 T-Mask B

Size: 16mm*16mm
Light Angle: 120°
PCB Widths: 8-12mm



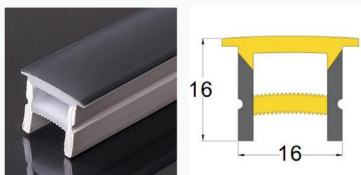
1810 T-Mask A

Size: 18mm*10mm
Light Angle: 120°
PCB Widths: 8-12mm



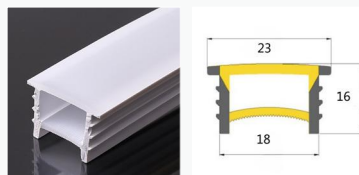
1616 T-Mask B Black

Size: 16mm*16mm
Light Angle: 120°
PCB Widths: 8-12mm



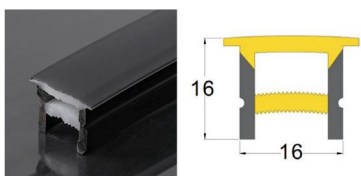
1816 T-Mask C

Size: 18mm*16mm
Light Angle: 120°
PCB Widths: 8-12mm



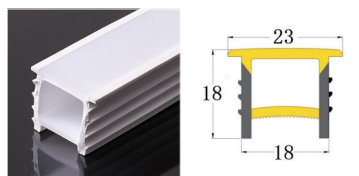
1616 T-Mask B Black

Size: 16mm*16mm
Light Angle: 120°
PCB Widths: 8-12mm



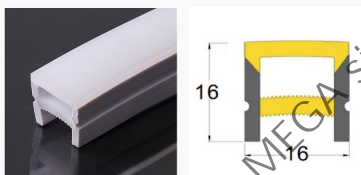
1818 T-Mask A

Size: 18mm*18mm
Light Angle: 120°
PCB Widths: 8-12mm



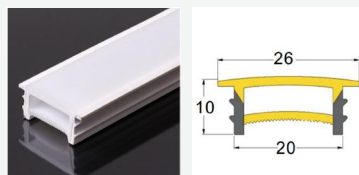
1616 Mask B

Size: 16mm*16mm
Light Angle: 120°
PCB Widths: 8-12mm



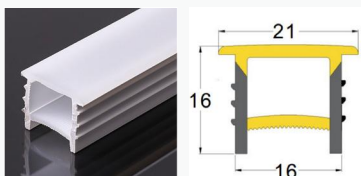
2010 T-Mask A

Size: 20mm*10mm
Light Angle: 120°
PCB Widths: 8-12mm



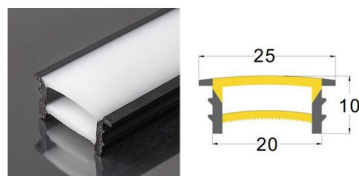
1616T- Mask C

Size: 16mm*16mm
Light Angle: 120°
PCB Widths: 8-12mm



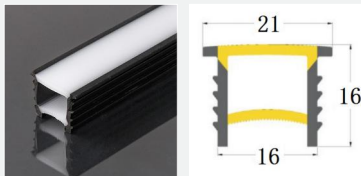
2010 Mask A Black Frame

Size: 20mm*10mm
Light Angle: 120°
PCB Widths: 8-15mm



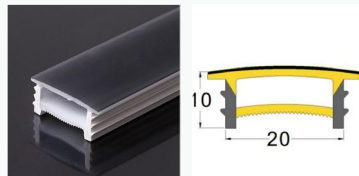
1616 T-Mask Black Frame

Size: 16mm*16mm
Light Angle: 120°
PCB Widths: 8-12mm



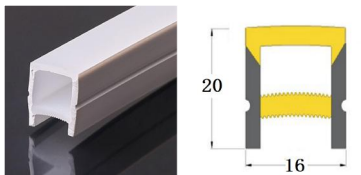
2010 T-Mask A Black

Size: 20mm*10mm
Light Angle: 120°
PCB Widths: 8-12mm



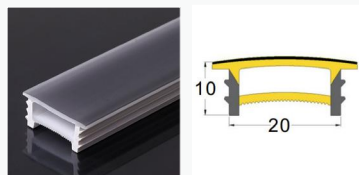
1620 Mask B

Size: 16mm*20mm
Light Angle: 120°
PCB Widths: 8-12mm



2010 Mask A Grey

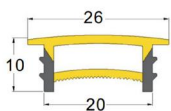
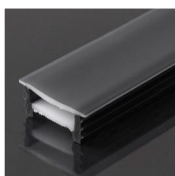
Size: 20mm*10mm
Light Angle: 120°
PCB Widths: 8-15mm



E Mask Series

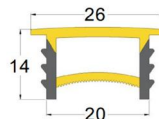
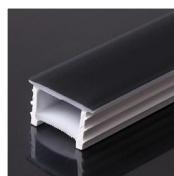
2010 T-Mask A Black

Size: 20mm*10mm
Light Angle: 120°
PCB Widths: 8-12mm



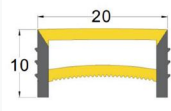
2014 T-Mask A Black

Size: 20mm*14mm
Light Angle: 120°
PCB Widths: 8-12mm



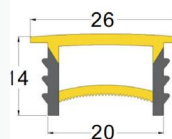
2010 Mask A

Size: 20mm*10mm
Light Angle: 120°
PCB Widths: 8-12mm



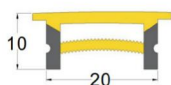
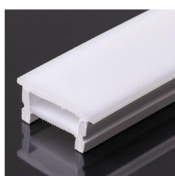
2014 Mask A Grey

Size: 20mm*14mm
Light Angle: 120°
PCB Widths: 8-15mm



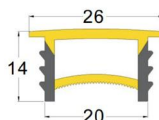
2010 T-Mask B

Size: 20mm*10mm
Light Angle: 120°
PCB Widths: 8-12mm



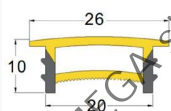
2014 T-Mask A Black

Size: 20mm*14mm
Light Angle: 120°
PCB Widths: 8-12mm



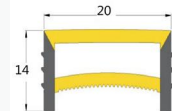
2010 T-Mask C

Size: 20mm*10mm
Light Angle: 120°
PCB Widths: 8-12mm



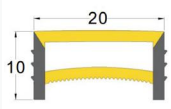
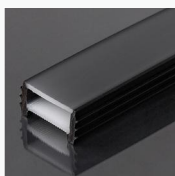
2014 Mask A

Size: 20mm*14mm
Light Angle: 120°
PCB Widths: 8-12mm



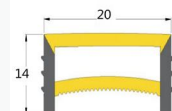
2010 Mask Black

Size: 20mm*10mm
Light Angle: 120°
PCB Widths: 8-15mm



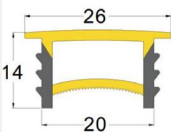
2014 Mask A Black

Size: 20mm*14mm
Light Angle: 120°
PCB Widths: 8-12mm



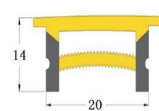
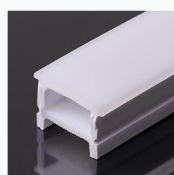
2014 T-Mask A

Size: 20mm*14mm
Light Angle: 120°
PCB Widths: 8-12mm



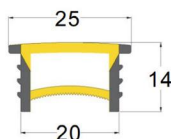
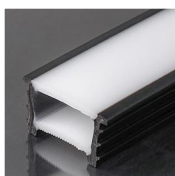
2014 T-Mask B

Size: 20mm*14mm
Light Angle: 120°
PCB Widths: 8-12mm



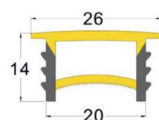
2014 T-Mask A Black Frame

Size: 20mm*14mm
Light Angle: 120°
PCB Widths: 8-12mm



2014 T-Mask C

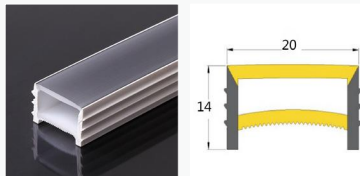
Size: 20mm*14mm
Light Angle: 120°
PCB Widths: 8-15mm



E Mask Series

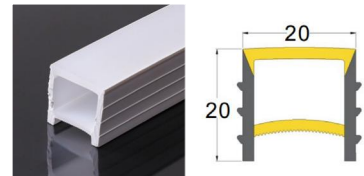
2014 Mask Grey

Size: 20mm*14mm
Light Angle: 120°
PCB Widths: 8-15mm



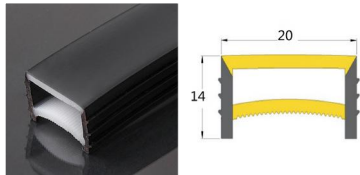
2020 Mask A

Size: 20mm*20mm
Light Angle: 120°
PCB Widths: 8-12mm



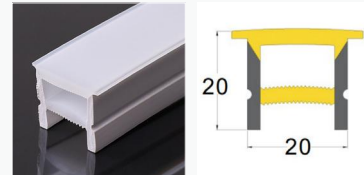
2014 Mask Black

Size: 20mm*14mm
Light Angle: 120°
PCB Widths: 8-15mm



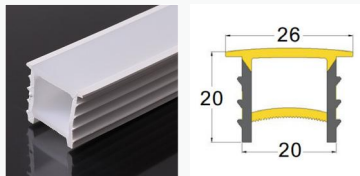
2020 T-Mask B

Size: 20mm*20mm
Light Angle: 120°
PCB Widths: 8-12mm



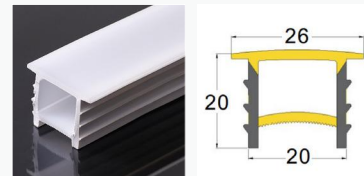
2020 Mask A

Size: 20mm*20mm
Light Angle: 120°
PCB Widths: 8-15mm



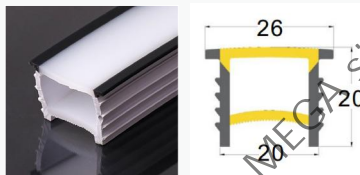
2020 T-Mask B-2

Size: 20mm*20mm
Light Angle: 120°
PCB Widths: 8-15mm



2020 T-Mask A Black Frame

Size: 20mm*20mm
Light Angle: 120°
PCB Widths: 8-15mm



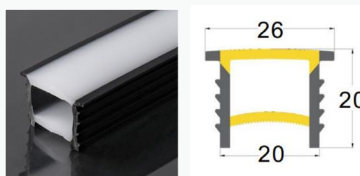
2020 T-Mask B Black Face

Size: 20mm*20mm
Light Angle: 120°
PCB Widths: 8-15mm



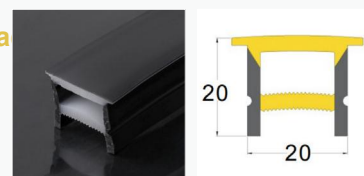
2020 T-Mask A Black Frame

Size: 20mm*20mm
Light Angle: 120°
PCB Widths: 8-15mm



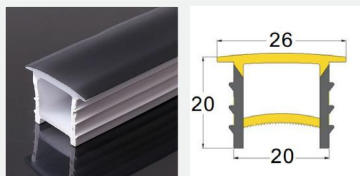
2020 T-Mask B Black Face

Size: 20mm*20mm
Light Angle: 120°
PCB Widths: 8-15mm



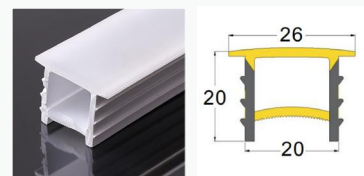
2020 T-Mask A Black face

Size: 20mm*20mm
Light Angle: 120°
PCB Widths: 8-12mm



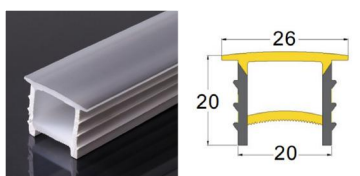
2020 T-Mask C

Size: 20mm*20mm
Light Angle: 120°
PCB Widths: 8-15mm



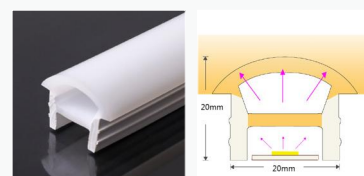
2020 T-Mask A Grey Face

Size: 20mm*20mm
Light Angle: 120°
PCB Widths: 8-12mm



2020 Mask Arc

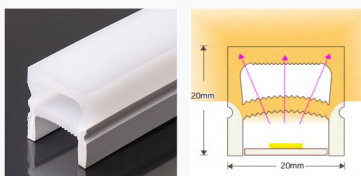
Size: 20mm*20mm
Light Angle: 120°
PCB Widths: 8-15mm



E Mask Series

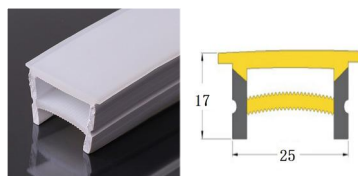
2020 Mask Three-Side

Size: 20mm*20mm
Light Angle: 120°
PCB Widths: 8-12mm



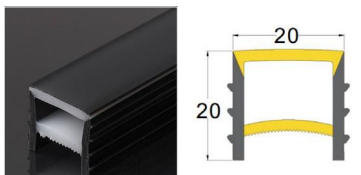
2517 T-Mask B

Size: 25mm*17mm
Light Angle: 120°
PCB Widths: 10-15mm



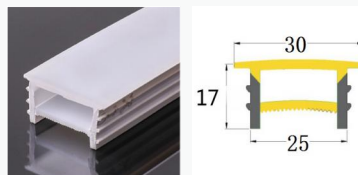
2020 Mask Black

Size: 20mm*20mm
Light Angle: 120°
PCB Widths: 8-15mm



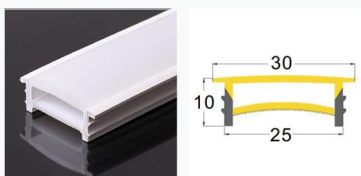
2517 T-Mask C

Size: 25mm*17mm
Light Angle: 120°
PCB Widths: 8-15mm



2510 Mask A

Size: 25mm*10mm
Light Angle: 120°
PCB Widths: 8-15mm



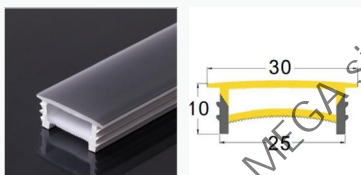
: 2520 Mask A

Size: 25mm*20mm
Light Angle: 120°
PCB Widths: 8-15mm



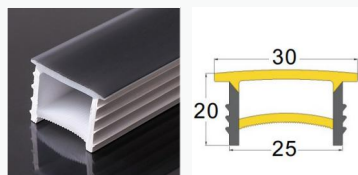
2510 Mask A Grey Face

Size: 25mm*10mm
Light Angle: 120°
PCB Widths: 10-15mm



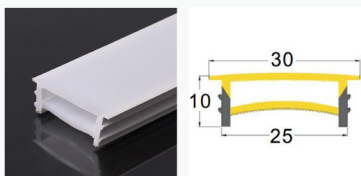
2520 Mask A Black Face

Size: 25mm*20mm
Light Angle: 120°
PCB Widths: 10-15mm



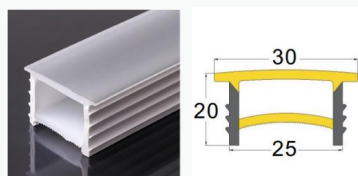
2510 T-Mask C

Size: 25mm*10mm
Light Angle: 120°
PCB Widths: 8-15mm



2520 T-Mask A Grey Face

Size: 25mm*20mm
Light Angle: 120°
PCB Widths: 10-15mm



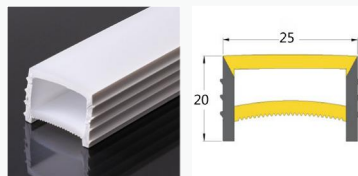
2514 T-Mask C

Size: 25mm*14mm
Light Angle: 120°
PCB Widths: 8-15mm



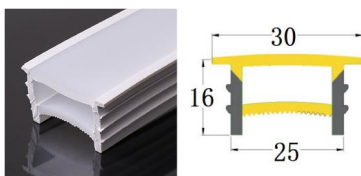
2520 Mask A

Size: 25mm*20mm
Light Angle: 120°
PCB Widths: 8-15mm



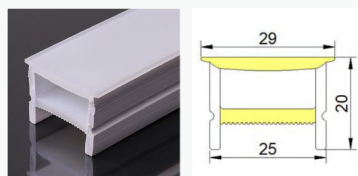
2516 T-Mask A

Size: 25mm*16mm
Light Angle: 120°
PCB Widths: 8-15mm



2520 T-Mask B

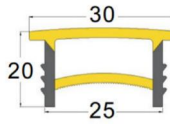
Size: 25mm*20mm
Light Angle: 120°
PCB Widths: 10-15mm



E Mask Series

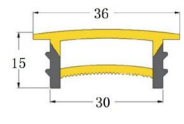
2520 T-Mask C

Size: 25mm*20mm
Light Angle: 120°
PCB Widths: 8-15mm



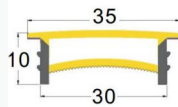
3015 T-Mask A

Size: 30mm*15mm
Light Angle: 120°
PCB Widths: 8-15mm



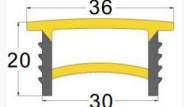
3010 T-Mask A

Size: 30mm*10mm
Light Angle: 120°
PCB Widths: 8-15mm



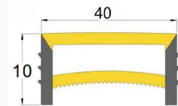
3020 T-Mask A

Size: 30mm*20mm
Light Angle: 120°
PCB Widths: 8-15mm



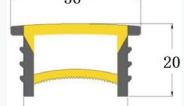
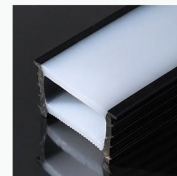
3010 Mask A

Size: 30mm*10mm
Light Angle: 120°
PCB Widths: 10-20mm



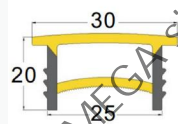
3020 Mask A Black Frame

Size: 30mm*20mm
Light Angle: 120° PCB
Widths: 12-20mm



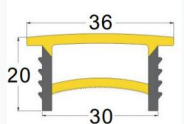
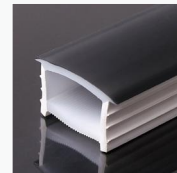
2520 T-Mask C

Size: 25mm*20mm
Light Angle: 120°
PCB Widths: 8-15mm



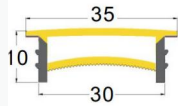
3020 Mask A Black Face

Size: 30mm*20mm
Light Angle: 120°
PCB Widths: 10-15mm



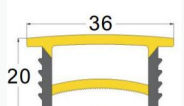
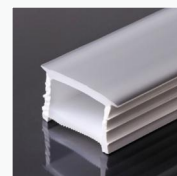
3010 T-Mask A

Size: 30mm*10mm
Light Angle: 120°
PCB Widths: 8-15mm



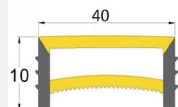
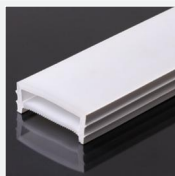
3020 Mask A Grey Face

Size: 30mm*20mm
Light Angle: 120°
PCB Widths: 10-20mm



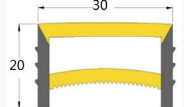
3010 Mask A

Size: 30mm*10mm
Light Angle: 120°
PCB Widths: 10-20mm



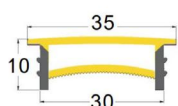
3020 Mask A

Size: 30mm*20mm
Light Angle: 120°
PCB Widths: 10-20mm



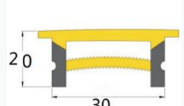
3010 T-Mask C

Size: 30mm*10mm
Light Angle: 120°
PCB Widths: 10-20mm



3020 T-Mask B

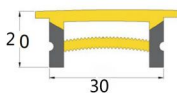
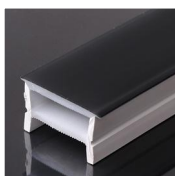
Size: 30mm*20mm
Light Angle: 120°
PCB Widths: 10-15mm



E Mask Series

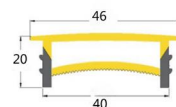
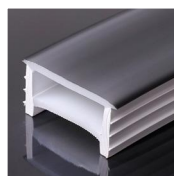
3020 Mask B Black Face

Size: 30mm*20mm
Light Angle: 120°
PCB Widths: 10-20mm



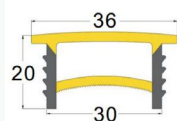
4020 Mask A Grey Face

Size: 40mm*20mm
Light Angle: 120°
PCB Widths: 10-20mm



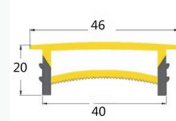
3020 T-Mask C

Size: 30mm*20mm
Light Angle: 120°
PCB Widths: 10-20mm



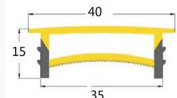
4020 T-Mask C

Size: 40mm*20mm
Light Angle: 120°
PCB Widths: 15-20mm



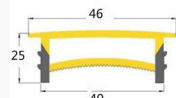
3515 T-Mask A

Size: 35mm*15mm
Light Angle: 120°
PCB Widths: 8-15mm



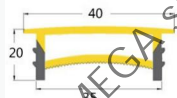
4025 T-Mask A

Size: 40mm*25mm
Light Angle: 120°
PCB Widths: 15-20mm



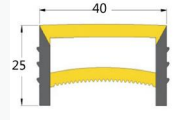
3520 T-Mask A

Size: 35mm*20mm
Light Angle: 120°
PCB Widths: 10-15mm



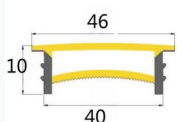
4025 Mask A

Size: 40mm*25mm
Light Angle: 120°
PCB Widths: 10-20mm



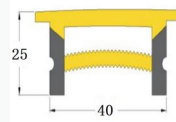
4010 T-Mask A

Size: 40mm*10mm
Light Angle: 120°
PCB Widths: 15-20mm



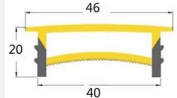
4025 T-Mask B

Size: 40mm*25mm
Light Angle: 120°
PCB Widths: 10-20mm



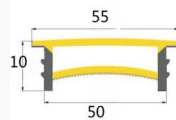
4020 T-Mask A

Size: 40mm*20mm
Light Angle: 120°
PCB Widths: 15-20mm



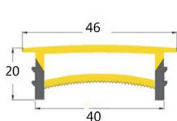
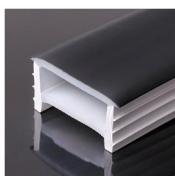
5010 T-Mask A

Size: 50mm*10mm
Light Angle: 120°
PCB Widths: 15-20mm



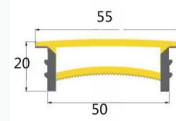
4020 Mask A Black Face

Size: 40mm*20mm
Light Angle: 120°
PCB Widths: 15-20mm



5020 T-Mask A

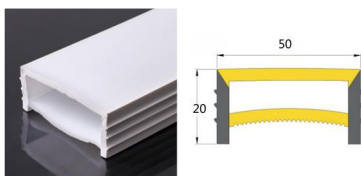
Size: 50mm*20mm
Light Angle: 120°
PCB Widths: 15-20mm



E Mask Series

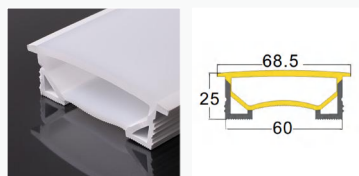
5020 Mask A

Size: 50mm*20mm
Light Angle: 120°
PCB Widths: 8-20mm



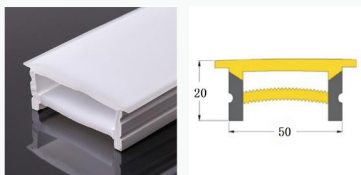
6025 T-Mask A

Size: 60mm*25mm
Light Angle: 120°
PCB Widths: 15-20mm



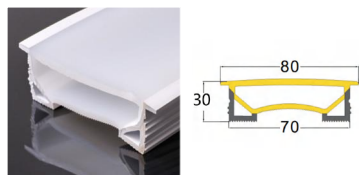
5020 T-Mask B

Size: 50mm*20mm
Light Angle: 120°
PCB Widths: 10-20mm



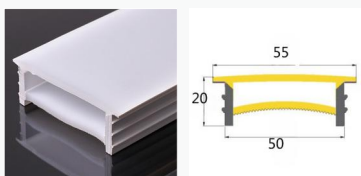
7030 T-Mask A

Size: 70mm*30mm
Light Angle: 120°
PCB Widths: 20-30mm



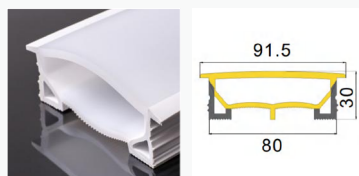
5020 T-Mask C

Size: 50mm*20mm
Light Angle: 120°
PCB Widths: 15-20mm



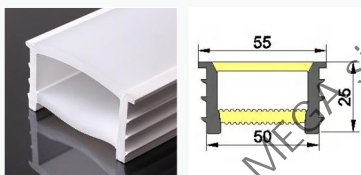
8030 T-Mask A

Size: 80mm*30mm
Light Angle: 120°
PCB Widths: 20-30mm



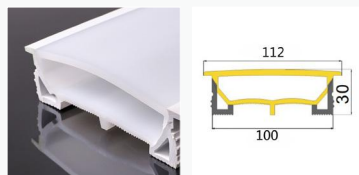
5025 T-Mask A

Size: 50mm*25mm
Light Angle: 120°
PCB Widths: 15-20mm



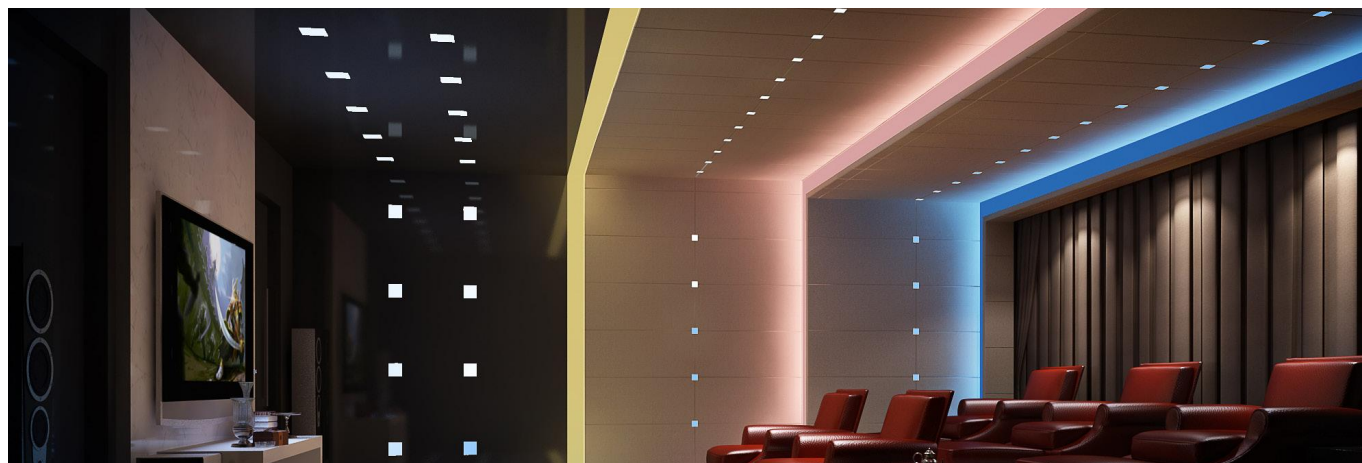
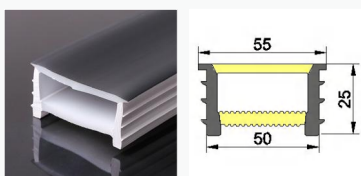
10030 T-Mask A

Size: 100mm*30mm
Light Angle: 120°
PCB Widths: 20-30mm



5025 T-Mask A Black Face

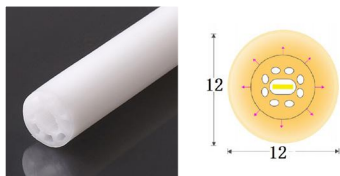
Size: 50mm*25mm
Light Angle: 120°
PCB Widths: 15-20mm



F Round Series

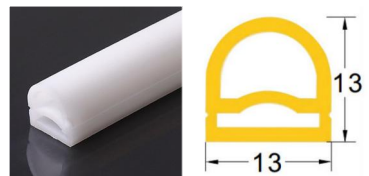
Φ12

Size: $\Phi 12\text{mm}$
Light Angle: 360°
PCB Widths: 4-5mm



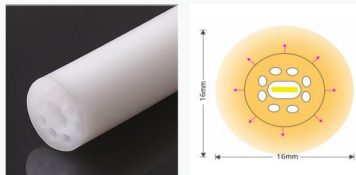
D1313 270°

Size: $13\text{mm} \times 13\text{mm}$
Light Angle: 270°
PCB Widths: 8mm



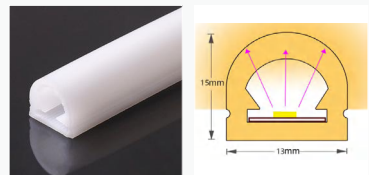
Φ16 8 holes

Size: $\Phi 16\text{mm}$
Light Angle: 360°
PCB Widths: 5mm



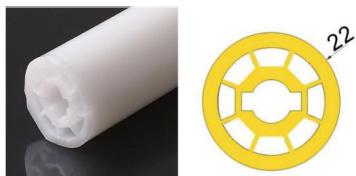
D1513 270°

Size: $15\text{mm} \times 13\text{mm}$
Light Angle: 270°
PCB Widths: 8-10mm



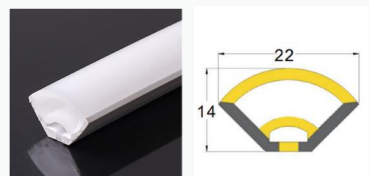
Φ22 new

Size: $\Phi 22\text{mm}$
Light Angle 360° :
PCB Widths: 8mm



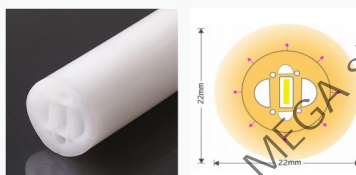
V22 Front

Size: $22\text{mm} \times 13\text{mm}$
Light Angle: 90°
PCB Widths: 8mm



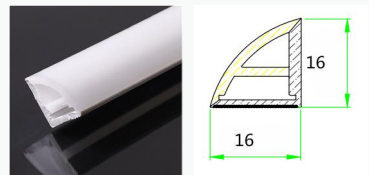
Φ22 8 holes

Size: $\Phi 22\text{mm}$ Light
Angle: 360° PCB
Widths: 5-6mm



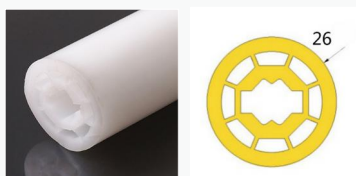
V1616 Front

Size: $16\text{mm} \times 16\text{mm}$
Light Angle: 90°
PCB Widths: 8mm



Φ26 new

Size: $\Phi 26\text{mm}$
Light Angle: 360°
PCB Widths: 8-10mm



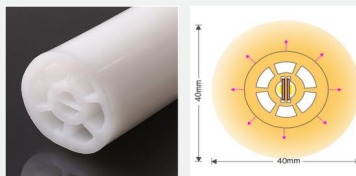
Colorful Silicone Flex

Size: $8\text{mm} \times 9\text{mm}$
Light Angle: 120°
PCB Widths: 4mm



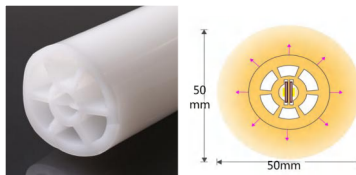
Φ40

Size: $\Phi 40\text{mm}$
Light Angle: 360°
PCB Widths: 8-10mm



Φ50

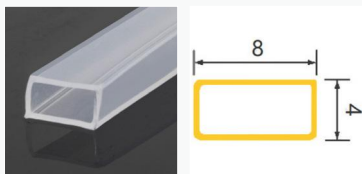
Size: $\Phi 50\text{mm}$
Light Angle: 360°
PCB Widths: 8-12mm



G Transparent Sleeve

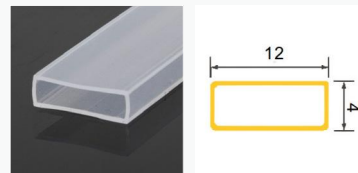
6mm

Size: 8x4mm
PCB Widths: 6MM
Light Angle: 120°



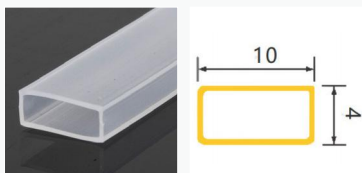
10mm

Size: 12x4mm
PCB Widths: 10MM
Light Angle: 120°



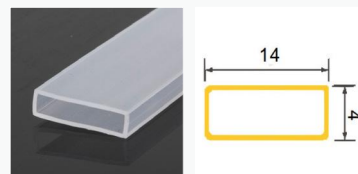
8mm

Size: 10x4mm
PCB Widths: 8MM
Light Angle: 120°



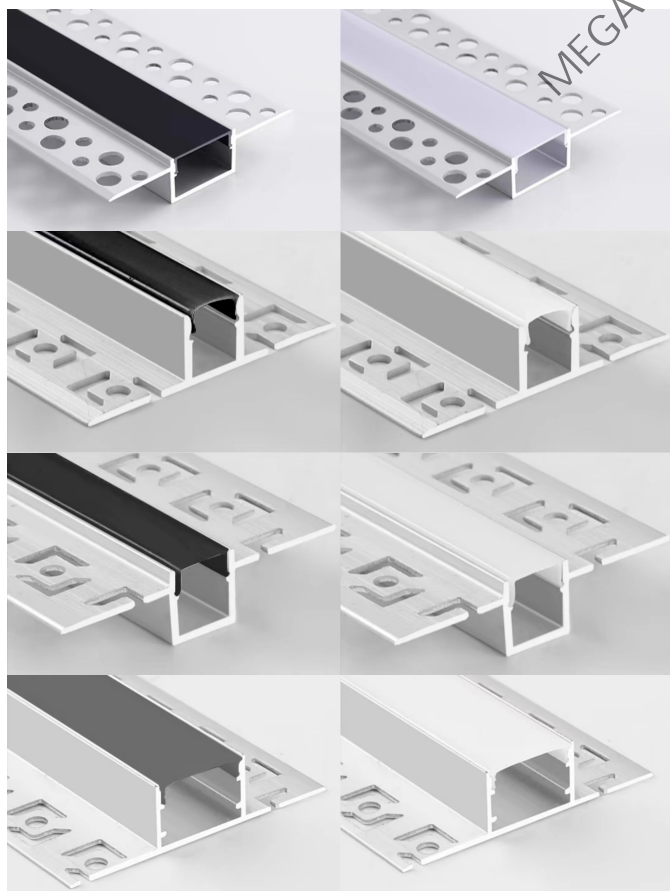
12mm

Size: 14x4mm
PCB Widths: 12MM
Light Angle: 120°

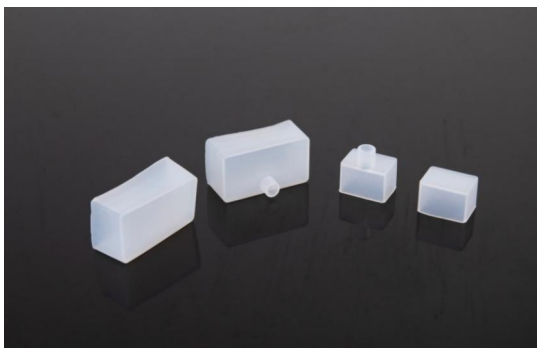


H Cover for Aluminum Profile

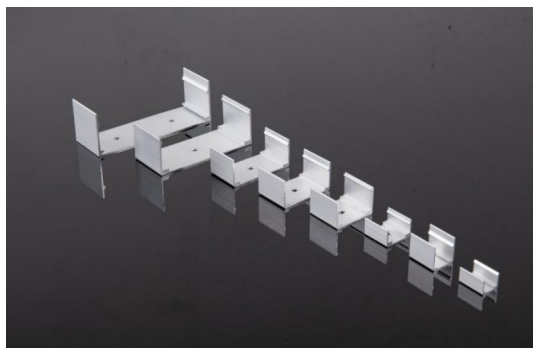
Silicone Cover for Aluminum Profile.
Customizable for Any Size.



Accessory



End Cap



AL Clip



Steel Mesh



Glue



Plastic Clip for Round Profile



Sling Accessory



MEGA

TIANHUA PROFILE

MEGA silicon profile



Culture

Be different, Be reliable, Be professional

Mission

Shade the world by our profiles, From China

Email: 1921278660@QQ.COM
INFORM@MEGA-LEDPROFILE.COM
WEB: WWW.MEGA-LEDPROFILE.COM